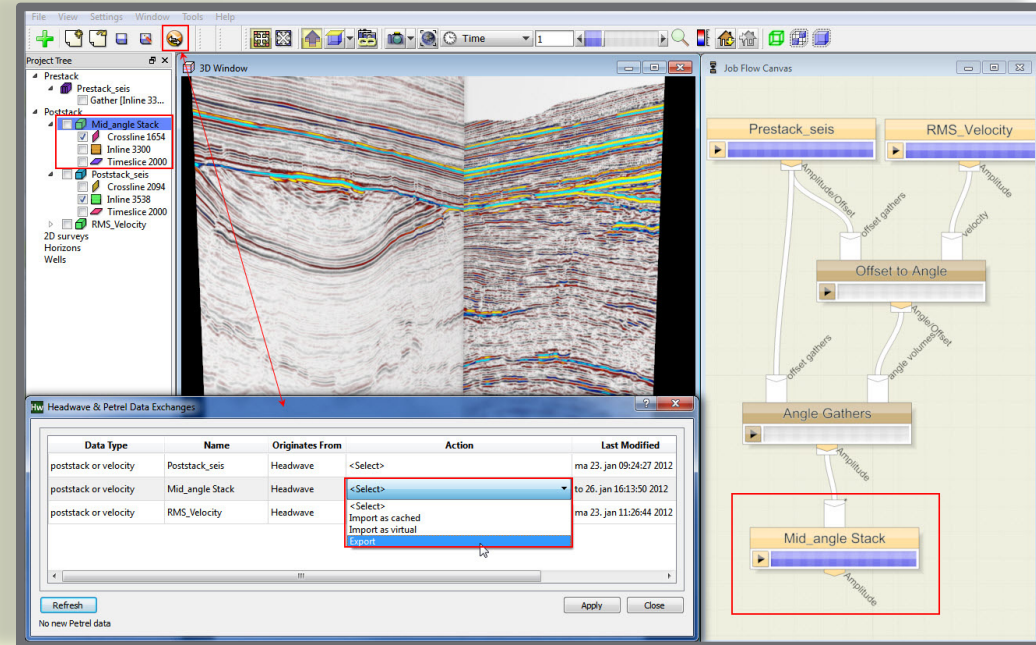


Petrel™ Connectivity

REAL TIME DATA CONNECTION BETWEEN HEADWAVE & PETREL™

The Headwave Data Connectivity Plug-in for Petrel™ allows highly interactive data integration and exchange between Headwave and Schlumberger Information Solutions' Petrel™ product without having to import and export files. This product allows easy data interchange between a running Headwave instance and a running Petrel™ instance, enabling workflows that span both applications.

For example, seismic poststack data stored in Petrel™ can be transferred to Headwave where new attributes can be computed using Headwave's algorithms and the result transferred back to Petrel™. The plug-in can also transfer horizon interpretation from Petrel™ to Headwave where horizon attributes and horizon slice attribute volumes can easily be created using drag and drop of newly created seismic attributes volumes onto the imported horizon.

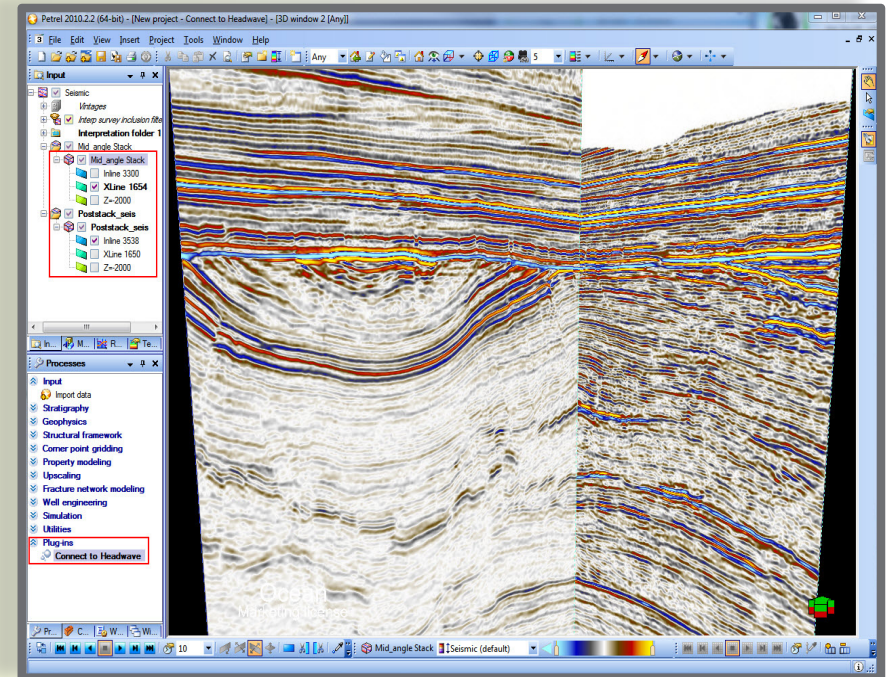


The picture shows a Headwave workflow where a mid-angle stack is created on the fly in Headwave, then cached when the parameters have been optimized to create a good interpretation volume. This volume can be transferred easily to Petrel™ for interpretation using the Petrel™ link option in Headwave.

Petrel™ Connectivity

KEY FEATURES

- Enables workflows that span across Headwave and Petrel™ applications
- No import or export necessary
- Interactive visualization QC and manipulation of shared data from Petrel™ to Headwave and vice versa
- Optimal stacks (attributes, angle stacks, intercept/gradient stacks, etc.) can easily be created in Headwave and transferred via link to Petrel™ for interpretation and analysis
- Scalability from a specific region of interest to full 3D poststack volume
- Short transfer time of large datasets



The picture shows the optimized angle cube and the original seismic cube transferred to Petrel™ for interpretation.

CORPORATE OFFICE

Headwave, Inc

14701 St. Mary's Lane, Suite 175
Houston, TX 77079
USA
Phone +1 713 554 3940
www.headwave.com

PRINCIPAL OFFICES

Headwave EMEA

Raadhusgaten 17
N-0158 Oslo
Norway
Phone +47 215 68 444

Headwave EMEA NL

2e De Riemerstraat 184
2513 CZ 's-Gravenhage
The Netherlands
Phone +47 215 68 444